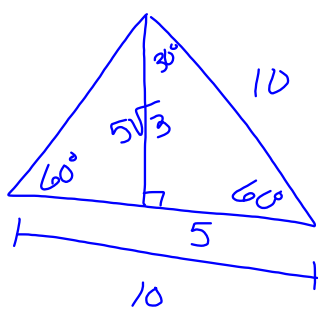


$$\begin{array}{l}
 1. \quad 1 \quad 1 \quad 1\sqrt{2} \\
 2. \quad 4 \quad 4 \quad 4\sqrt{2} \\
 3. \quad 7 \quad 7 \quad 7\sqrt{2} \\
 4. \quad 2 \quad 2 \quad 2\sqrt{2} \\
 \quad \frac{45}{X} \quad \frac{45}{X} \quad \frac{90}{X\sqrt{2}}
 \end{array}$$

$$\begin{array}{l}
 \quad \quad \quad X \quad X \quad X\sqrt{2} \\
 9. \quad 13 \quad 13 \quad 13\sqrt{2} \\
 10. \quad 15 \quad 15 \quad 15\sqrt{2} \\
 11. \quad 18 \quad 18 \quad 18\sqrt{2} \\
 12. \quad 7\sqrt{2} \quad 7\sqrt{2} \quad 14
 \end{array}$$

$$\frac{14}{\sqrt{2}} \cdot \frac{\sqrt{2}}{\sqrt{2}} = \frac{14\sqrt{2}}{2} = 7\sqrt{2}$$



$$10^2 = 5^2 + x^2$$

	30	60	90
	5	$5\sqrt{3}$	10
(13)	9	$9\sqrt{3}$	18
(14)	2	$2\sqrt{3}$	4
(15)	10	$10\sqrt{3}$	20
(16)	3	$3\sqrt{3}$	6
(17)	5	$5\sqrt{3}$	10
(18)	1	$\sqrt{3}$	2

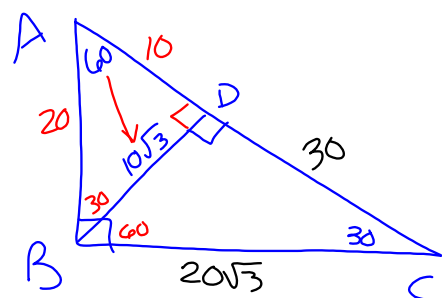
	30	60	90
	x	$x\sqrt{3}$	2x

19. 8 $8\sqrt{3}$ 16

20. 22 $22\sqrt{3}$ 44

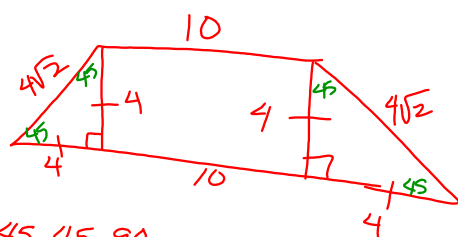
21. $6\sqrt{3}$ 18 $12\sqrt{3}$

$$\frac{18}{\sqrt{3}} \cdot \frac{\sqrt{3}}{\sqrt{3}} = \frac{18\sqrt{3}}{3}$$



30	60	90
x	$x\sqrt{3}$	2x
10	$10\sqrt{3}$	20
$10\sqrt{3}$	30	$20\sqrt{3}$

$10\sqrt{3} \cdot \sqrt{3}$



45	45	90
x	x	$x\sqrt{2}$

$$P = 28 + 8\sqrt{2} \text{ units}$$

$$P \approx 39.3 \text{ units}$$